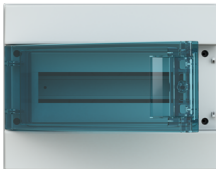




 PRODUCT-DETAILS

65P12X12

Consumer unit MISTRAL65, Surface mounting, 12 modules, 1 row(s), IP65, Door: Soltero, Plastic, Transparente, Dimensions: 250 mm x 320 mm x 155 mm



Información General

Tipo de producto extendido	65P12X12
Código de producto	1SL1202A00
Designación de tipo ABB	Mistral65
EAN	8000126098310
Descripción corta	Consumer unit MISTRAL65, Surface mounting, 12 modules, 1 row(s), IP65, Door: Soltero, Plastic, Transparente, Dimensions: 250 mm x 320 mm x 155 mm
Descripción larga	MISTRAL65 transparent door 12 DIN modules GWT 650°C

Técnica

Número de terminales de línea	0
Número de filas	1
Tipo de cierre	Función de ajuste
Tipo de configuración	Assembled with DIN-rail
Tipo de placa de cubierta	Door
Tipo de puerta	Soltero

Acabado de la superficie de la puerta	Transparente
Accesorios disponibles	Sí
Unidades DIN Place	12
Tipo de terminal	Sin terminales

Eléctrica

Pérdida de potencia	$\Delta t = 30K$ 27 W
---------------------	-----------------------

Diseño

Material del módulo	thermoplastic
Material de la carcasa	Plastic
Material de la puerta	Plastic
Puerta transparente	Sí
Estilo de cubierta	Cerrado
Número RAL	RAL 7035 - Gris claro
Color	Gris
Número de módulos	12

Cumplimiento de Materiales

Información sobre RoHS	9AKK108468A2427
Estado de RoHS	Siguiendo la Directiva de la UE 2011/65/UE y la Enmienda 2015/863 22 de julio de 2019
Fecha de RoHS	20221015
Declaración REACH	9AKK108469A7731
Información REACH	Verdadero: contiene sustancias > 0,1 porcentaje en masa
Fecha REACH	20240429
Plantilla de notificación de minerales de conflicto (CMRT)	9AKK108468A3363
Categoría RAEE	Producto que no está incluido en el ámbito de aplicación de los RAEE

Ambiente

Grado de protección	IP65
Clase de protección	Aislado (Clase II)
Información medioambiental	1SLC801013D0201

Dimensiones

Anchura en número de espacios modulares	12
Ancho del product	320 mm
Alto del producto	250 mm
Largo del product	155 mm
Peso del product	1.37 kg
Profundidad incorporada (t ₂)	98 mm

Ingeniería

Building information modeling - BIM	9AKK107046A8397
-------------------------------------	-----------------

Clasificación

Embalaje Nivel 1 Unidades	empaquetar 1 piece
Embalaje Nivel 1 Peso	10.6 kg
Número E (Noruega)	1700228

Certificados y Declaraciones (Número de Documento)

Declaración de conformidad - CE	9AKK108468A2427
---------------------------------	-----------------

Instalación

Instrucciones y manuales	9AKK108468A8244
Tipo de montaje	Surface mounting

Descargas Populares

Ficha técnica, información técnica	1SLC801013D0201
------------------------------------	-----------------

Clasificaciones y estándares externos

ETIM 9	EC000214 - Small distribution board
ETIM 10	EC000214 - Small distribution board
Clase electrónica	V11.0 : 27142409
Código de clasificación de objetos	U

Accessories

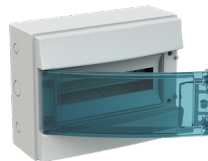
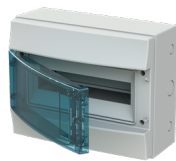
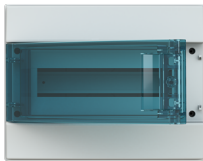
Identifier	Description	Type	Quantity	Unit Of Measure
1SL1938A00	Enclosure accessories cable grommets MISTRAL65/65H accessories, Dimensions: 38 mm x 38 mm x 5 mm	MZKT32P5	1	pedazo
1SL1937A00	Enclosure accessories cable grommets MISTRAL65/65H accessories, Dimensions: 32 mm x 32 mm x 5 mm	MZKT25P10	1	pedazo
1SL1936A00	Enclosure accessories cable grommets MISTRAL65/65H accessories, Dimensions: 28 mm x 28 mm x 5 mm	MZKT20P10	1	pedazo
1SL1935A00	Enclosure accessories cable grommets MISTRAL65/65H accessories, Dimensions: 24 mm x 24 mm x 5 mm	MZKT16P10	1	pedazo

1SL1927A00	Enclosure accessories wall brackets MISTRAL65/65H accessories, Dimensions: 131 mm x 139 mm x 239 mm	MZB65P4	1	pedazo
1SL1931A00	Enclosure accessories lock MISTRAL65/65H accessories, Dimensions: 116.000 mm x 164.000 mm x 274.000 mm	MZS65	1	pedazo
1SL1949A00	Enclosure accessories coupler set MISTRAL65/65H accessories, Dimensions: 50 mm x 50 mm x 20 mm	MZV285	1	pedazo
1SL1929A00	Enclosure accessories module blanking plate Consumer units accessories, 12 modules, 1 row (s)	1SLM006500A 1929	1	pedazo
1SL1942A00	Enclosure accessories trunking MISTRAL65/65H accessories, Dimensions: 80 mm x 310 mm x 98 mm	MZRB65	1	pedazo
1SL1945A00	Enclosure accessories cover MISTRAL65/65H accessories, 12 modules, 1 row(s), Dimensions: 150 mm x 243 mm x 19 mm	MZAG12	1	pedazo
1SL1946A00	Enclosure accessories cover MISTRAL65/65H accessories, 12 modules, 1 row(s), Dimensions: 125 mm x 243 mm x 19 mm	MZAG13	1	pedazo
1SLM006500A1955	Enclosure accessories mounting plate MISTRAL65/65H accessories, 36 modules, 3 row(s), Dimensions: 246 mm x 456 mm x 456.000 mm	41Z129	1	pedazo
1SLM006500A1951	Enclosure accessories mounting plate MISTRAL65/65H accessories, 36 modules, 3 row(s), Dimensions: 246 mm x 458 mm x 458.000 mm	41Z125	1	pedazo
1SLM006500A1953	Enclosure accessories mounting plate MISTRAL65/65H accessories, 24 modules, 2 row(s), Dimensions: 246 mm x 306 mm x 306.000 mm	41Z127	1	pedazo
1SLM006500A1959	Enclosure accessories Tmax XT kit MISTRAL65/65H accessories, 36 modules, 3 row(s), Dimensions: 90.000 mm x 210.000 mm x 500.000 mm	41Z133	1	pedazo
1SLM006500A1961	Enclosure accessories inner door MISTRAL65/65H accessories, 24 modules, 2 row(s), Dimensions: 15.000 mm x 251.000 mm x 248.000 mm	41Z135	1	pedazo
1SLM006500A1963	Enclosure accessories inner door MISTRAL65/65H accessories, 36 modules, 3 row(s), Dimensions: 15.000 mm x 245.000 mm x 400.000 mm	41Z137	1	pedazo
1SLM006500A1965	Enclosure accessories cover with slot MISTRAL65/65H accessories, 12 modules, 1 row(s), IP2XC, Dimensions: 13 mm x 150 mm x 245 mm	41Z150	1	pedazo
1SLM006500A1966	Enclosure accessories cover with slot MISTRAL65/65H accessories, 12 modules, 1 row(s), IP2XC, Dimensions: 13 mm x 125 mm x 245 mm	41Z151	1	pedazo
1SL1920A00	Enclosure accessories mounting plate MISTRAL65/65H accessories, 12 modules, 1 row(s), Dimensions: 116 mm x 250 mm x 2 mm	MZM112	1	pedazo
1SL1921A00	Enclosure accessories mounting plate MISTRAL65/65H accessories, 12 modules, 2 row(s), Dimensions: 306 mm x 250 mm x 2 mm	MZM212	1	pedazo
1SL1904A00	Enclosure accessories door MISTRAL65/65H accessories, 12 modules, 1 row(s), IP65, Door: Soltero, Opaco, Dimensions: 280.000 mm x 320 mm x 395.000 mm	1SLM006500A 1904	1	pedazo

1SL1905A00	Enclosure accessories door MISTRAL65/65H accessories, 12 modules, 1 row(s), IP65, Door: Soltero, Transparente, Dimensions: 280.000 mm x 320 mm x 395.000 mm	1SLM006500A 1905	1	pedazo
1SLM004100A1954	Terminal carrier 12M Mistral basic	41Z26	1	pedazo
1SPE007715F0752	Terminal carrier 12M MISTRAL	41Z68	1	pedazo
1SPE007715F9701	Terminal block screwless N 5x1,5-4mm ² , 63 A	41Z70	1	pedazo
1SPE007715F9702	Terminal block screwless N 5x1,5-4mm ² +1x25mm ² , 63 A	41Z71	1	pedazo
1SPE007715F9703	Terminal block screwless N 8x1,5-4mm ² +2x25mm ² , 63 A	41Z72	1	pedazo
1SPE007715F9704	Terminal block screwless N 11x1,5-4mm ² +3x25mm ² , 63 A	41Z73	1	pedazo
1SPE007715F9705	Terminal block screwless N 14x1,5-4mm ² +4x25mm ² , 63 A	41Z74	1	pedazo
1SPE007715F9706	Terminal block screwless N 17x1,5-4mm ² +5x25mm ² , 63 A	41Z75	1	pedazo
1SPE007715F9707	Terminal block screwless N 20x1,5-4mm ² +6x25mm ² , 63 A	41Z76	1	pedazo
1SPE007715F9712	Terminal block screwless PE 5x1,5-4mm ² +1x25mm ² , 63 A	41Z77	1	pedazo
1SPE007715F9713	Terminal block screwless PE 8x1,5-4mm ² +2x25mm ² , 63 A	41Z78	1	pedazo
1SPE007715F9714	Terminal block screwless PE 11x1,5-4mm ² +3x25mm ² , 63 A	41Z79	1	pedazo
1SPE007715F9715	Terminal block screwless PE 14x1,5-4mm ² +4x25mm ² , 63 A	41Z80	1	pedazo
M125310000	TERMINAL BAR 5H D.4.5MM, 63 A	41Z28	1	pedazo
1SPE007715F9716	Terminal block screwless PE 17x1,5-4mm ² +5x25mm ² , 63 A	41Z81	1	pedazo
M125320000	TERMINAL BAR 10H D.4.5MM AND 3H D.5.6MM, 63 A	41Z29	1	pedazo
1SPE007715F9717	Terminal block screwless PE 20x1,5-4mm ² +6x25mm ² , 63 A	41Z82	1	pedazo
M125330000	TERMINAL BAR 16H D.4.5MM AND 3H D.5.6MM, 63 A	41Z30	1	pedazo
1SPE007715F9718	ZK237G	41Z152	1	pedazo
M125340000	TERMINAL BAR 15H D.4.5MM AND 6H D.5.6MM, 63 A	41Z31	1	pedazo
1SPE007715F9708	ZK237B	41Z151	1	pedazo
M125350000	TERMINAL BAR 19H D.4.5MM AND 6H D.5.6MM, 63 A	41Z32	1	pedazo
1SPE007715F9709	ZK268B	41Z150	1	pedazo
1SPE007715F9719	ZK268G	41Z153	1	pedazo
1SPE007715F0732	Terminal block N 5x16mm ² +6x6mm ² , 100 A	41Z58	1	pedazo
1SPE007715F0733	Terminal block N 7x16mm ² +9x6mm ² , 100 A	41Z59	1	pedazo
1SPE007715F0741	Terminal block PE 3x16mm ² +3x6mm ² , 100 A	41Z62	1	pedazo
1SPE007715F0742	Terminal block PE 5x16mm ² +6x6mm ² , 100 A	41Z63	1	pedazo
1SPE007715F0743	Terminal block PE 7x16mm ² +9x6mm ² , 100 A	41Z64	1	pedazo
1SPE007715F0744	Terminal block PE 9x16mm ² +12x6mm ² , 100 A	41Z65	1	pedazo
1SPE007715F0745	Terminal block PE 11x16mm ² +15x6mm ² , 100 A	41Z66	1	pedazo
1SPE007715F5750	Consumer units accessories module blanking plate , 1 row(s), 12 modules, Plastic , Blanco	41Z24	1	pedazo
1SPE007715F5650	Consumer units accessories module blanking plate , 1 row(s), 12 modules, Plastic , Blanco	41Z23	1	pedazo
1SL0351A00	ANTI-CONDENSATION KIT	GMA1SL0351A 00	1	pedazo

Categorías

Productos y sistemas de baja tensión → Envolveres y sistemas de cableado → Cajas de distribución → Cajas de distribución de empotrar → MISTRAL65



360°